

Online příloha

Původní sdělení | Original research article

Clinical presentation of Cardiac Myxoma at Tertiary Referral Hospital in East Indonesia

Yan Efrata Sembiring, Muhammad Husein Dzikrillah, Ali Mustofa, Oky Revianto Sediono Pribadi, Danang Himawan Limanto, Edwin Yosef Widjaja, Heroe Soebroto, Jeswant Dillon, Pandit Bagus Tri Saputra

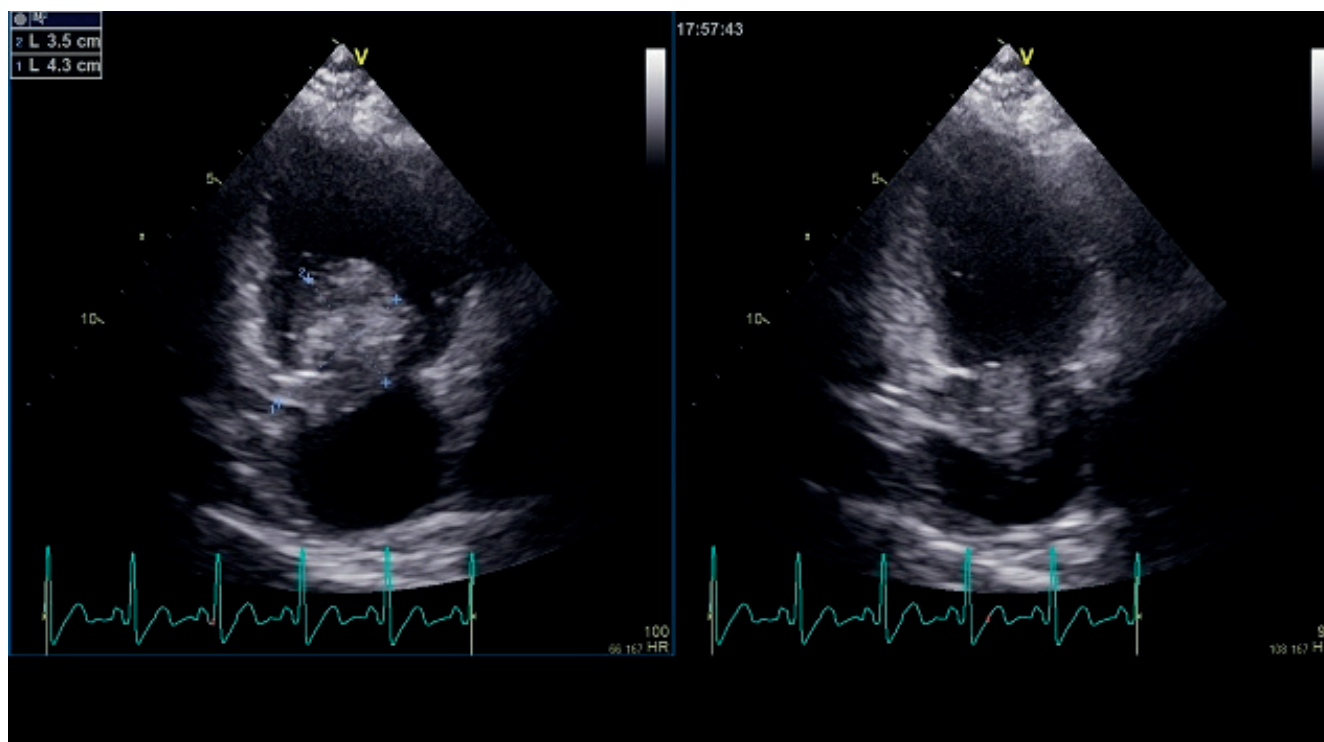


Fig. 1 – TTE revealed a pedunculated echogenic mass in the left atrium, attached to the atrial septum, measuring 4.3 × 3.5 cm with a stalk measuring 1.6 cm located 3 mm superior to the mitral annulus, extending into the left ventricle during diastole without attachment to the mitral valve in one of our patients.



Fig. 2 – A myxoma mass measuring 4.5 × 4 cm was excised from one of our patients.

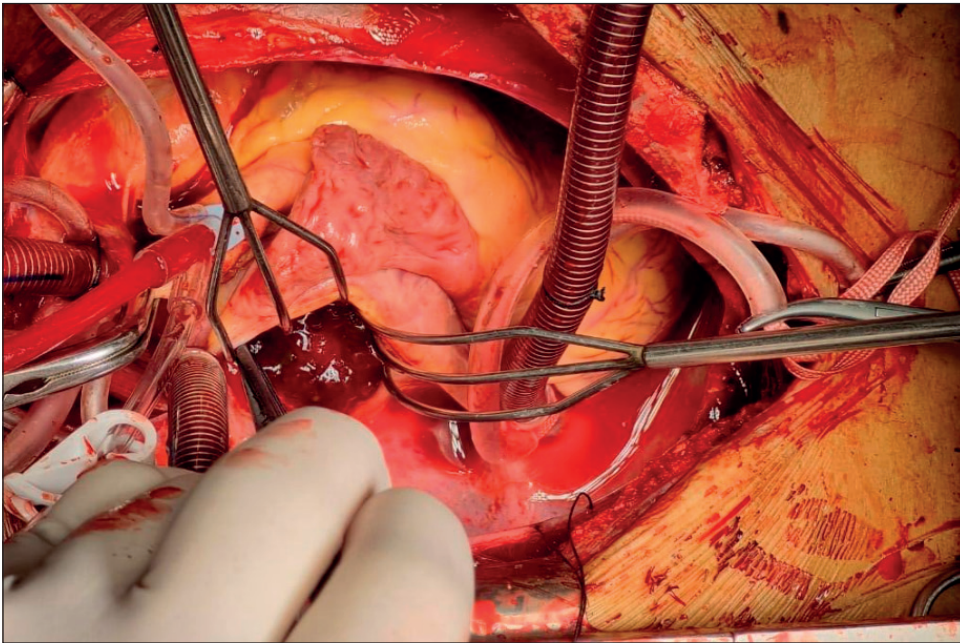


Fig. 3 – During the surgical procedure for the removal of the mass in one of our cardiac myxoma patients.